

**INSTRUMENT  
APPROACH  
CHART - ICAO**

**AERODROME ELEV 229'**  
HEIGHTS RELATED TO  
THR RWY 08 - ELEV 229'

RADAR APP: 120.40  
TWR: 118.10  
CLEARANCE: 122.10  
ATIS: 126.80

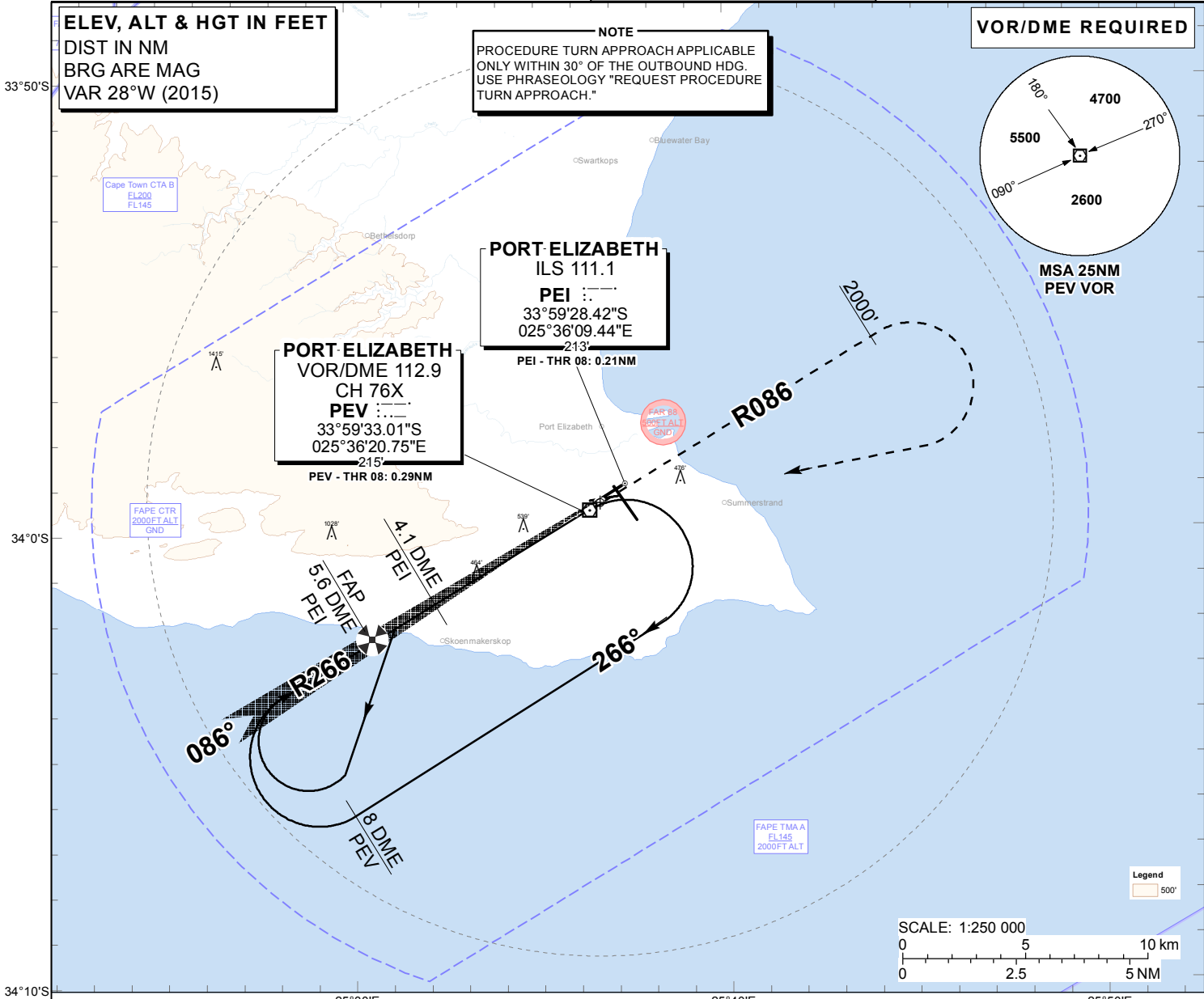
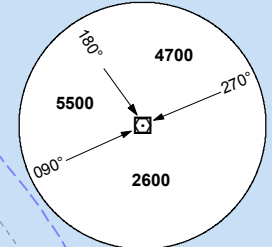
**PORT ELIZABETH  
ILS RWY 08  
CAT A - D**



**ELEV, ALT & HGT IN FEET**  
DIST IN NM  
BRG ARE MAG  
VAR 28°W (2015)

**NOTE**  
PROCEDURE TURN APPROACH APPLICABLE  
ONLY WITHIN 30° OF THE OUTBOUND HDG.  
USE PHRASEOLOGY "REQUEST PROCEDURE  
TURN APPROACH."

**VOR/DME REQUIRED**

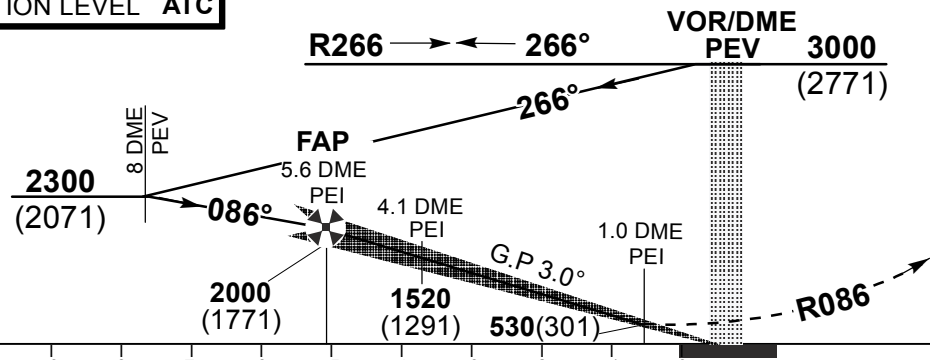


<b>PEI/DME</b>	<b>4.1</b>	<b>4</b>	<b>3</b>	<b>2</b>	<b>1</b>		
<b>ADVISORY ALT(HGT)</b>	<b>1520 (1291)</b>	<b>1490 (1261)</b>	<b>1170 (941)</b>	<b>850 (621)</b>	<b>530 (301)</b>		

**TRANSITION ALT 5000**  
**TRANSITION LEVEL ATC**

**INA ALT: 3000 or higher MSA**

**MISSED APPROACH:**  
Climb to 2000FT ALT.  
Maintain RWY track then  
turn right, climbing to  
3000FT ALT and  
return to PEV.



**ILS RDH 50**

**THR ELEV 229**

NM to/from **THR RWY 08**

<b>CHANGE: CAT II Minima</b>	<b>OCA (H)</b>				<b>GS</b>	<b>KT</b>	<b>80</b>	<b>100</b>	<b>120</b>	<b>140</b>	<b>160</b>	
	<b>A</b>	<b>B</b>	<b>C</b>	<b>D</b>	<b>5.6 DME PEI - THR</b>	<b>M:S</b>	<b>4:03</b>	<b>3:15</b>	<b>2:42</b>	<b>2:19</b>	<b>2:02</b>	
Straight-in Approach	CAT I	<b>429 (200)</b>	<b>429 (200)</b>	<b>429 (200)</b>	<b>429 (200)</b>	Rate of descent	<b>FPM</b>	<b>425</b>	<b>531</b>	<b>637</b>	<b>743</b>	<b>849</b>
	CAT II	<b>329 (100)</b>	<b>329 (100)</b>	<b>332 (103)</b>	<b>345 (116)</b>	<b>NOTE:</b>						
Circling	Circle to land at the discretion of the pilot in command.											

EFF:14 SEP 17